



Early Years Foundation Stage

Welcome to Stanstead's Foundation Unit where we value every child as an individual. We provide a stimulating and secure environment in which children can develop and learn at their own pace. Our role is to encourage children to become independent learners through a wide range of structured and creative activities. We believe that every child should be happy and feel valued at school.

Meet the team



Miss Goodger
EYFS Lead & Reception
Teacher



Miss Carpenter
Nursery Teacher



Miss Fyfe
Apprentice TA



Miss Sadler
Teaching Assistant



Mrs Liddiard
Teaching Assistant

Our Vision

Our highly bespoke and inspiring EYFS Curriculum is designed to reflect the interests and needs of our children and to immerse them in a language rich environment. We prioritise high quality interactions punctuated with adult focused activities, where appropriate. Our children explore in the provision through a carefully resourced continuous provision with enhancements to aid the development of skills and knowledge. It is therefore unique to Stanstead Flying High Academy.

Each enquiry planned is individually tailored to our children, with the aim of ensuring that all children leaving Reception are ready to start the KS1 curriculum. Our curriculum, underpinned by current research, ensures our children will be well-rounded individuals who are prepared for the next stage of their journey. Our enquiry-based approach takes children on a journey of memorable learning through rich and purposeful experiences, culminating in authentic outcomes which leave a legacy on the wider world.

Our ambitious Early Years curriculum aims to teach all children the skills and knowledge in order that they reach the seventeen Early Learning Goals described in the Early Years Foundation Stage framework. Our staff are highly skilled and confident with assessing necessary starting points based on quality baselining interactions.



Many of our activities are play-based, however there is also a need for some direct teacher-led activities to ensure all children gain essential knowledge and skills. Activities are expertly modelled, and priority is given to providing sufficient sustained periods of play with support and resources to allow children to repeat and practise their taught skill development.

We use Development Matters as a rich resource to support our knowledge of child development and as a supporting document for our curriculum. We feel that this document reflects our early years vision of embedding quality interactions in a variety of playful situations.

Starting at Stanstead

Starting in both Nursery and Reception is an important milestone in a child's life. As a school we will do all that we can to help them feel safe, welcome and secure. We are aware that this is also a big step for you and your child. We value the input you, as parents and carers, have made in your child's education and we look forward to developing a partnership with you.

Preparing your child

Starting school is a very exciting time for a young child and together we can make it a happy time for them.

Before starting, we will invite you to attend a short meet and greet, with your child, to allow us to give you our school paperwork, but this will also allow you to ask any questions you may have. From then we will organise settling in sessions before their official start date.

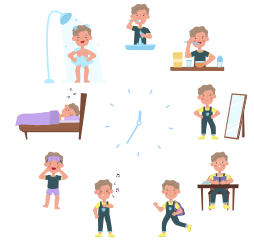


It is important that you talk to your child about coming to school, about the things they will be doing and the new friends they will make. It is also important to remember that every child is different. Some children may take longer to settle than others.

There are many ways that you can prepare your child for school:

Getting into a routine

Following a new routine can be hard, especially if you haven't had to before. A few weeks before your child starts it can help to build a routine, by having a regular bedtime, so they get used to it. A good night's sleep will mean your child is more willing to get up and dressed in the morning.



The journey to school

How will you be getting to school? Can you walk, scoot or cycle? Practise this journey at the time you will be going as it will help you to plan what time you need to leave home to get to school on time. Arriving in plenty of time helps your child to meet friends and go in together, rather than arriving after everyone is already settled; which can be difficult.



Independent dressing

As your child grows, they will want to become more independent in their self care skills. It may be faster and less messy to do things for your child but they learn so much more from being able to do things for themselves.

You can help by:

- Choosing clothes that are easy to get on and off, such as elasticated waist trousers and skirts.
- Buying shoes with Velcro fastenings.
- Ensuring all items of clothing are clearly labelled with their name and that your child can recognise their own name.
- Supporting your child to put on and take off jumpers, cardigans and coats.

Eating

Giving your child time to practise feeding themselves with cutlery as soon as they're ready and confident can really support your child at school. Don't worry if you have a fussy eater at home. It has been shown that children who refuse to eat certain foods at home are more likely to try them at school when sat round a dinner table with their friends.



Sessions

We offer 15 & 30 hours at our setting for Nursery children:

- 8.45am – 3.15pm Monday to Friday (30 hour coded is needed)
- 8.45am – 11.45am Monday to Friday (15 hours)
- 12.15pm - 3.15pm Monday to Friday (15 hours)

For children doing part-time hours parents may pay a top-up fee of £17 per day via ParentPay. If you are booking your child in for additional hours you will need to inform the class teacher.



Our school also offers wrap-around care with a breakfast and afterschool club through The Lime Trees. Breakfast club runs from 7.30am to 8.45am and afterschool club runs from 3.15pm to 6pm.



Dropping off & collection



Please ensure you are on time when dropping off and collecting your child. Gates open at 8:45 and close at 9:00 in the morning and in the afternoon gates are opened at 3:15 and closed for 3:30.

Collection/mid-day drop offs- please use the main school entrance or call the school office if you are using the Brisbane Drive gate .

If you are late for any reason, please go to the main school office. Please tell a member of staff if someone different is collecting your child. Your child may not be allowed to leave if we have not been informed. This is for their safety.

Snack & lunch time

Snack time- We offer children a piece of free fruit and milk. The milk & fruit is present on a self-service station for the children to independently access.



Lunch time- We have 1 hour for our lunch break, this gives the children plenty of time to eat their lunch and play outside either in the sensory garden or on the playing field. Children can either bring in a packed lunch or have a hot school dinner and dessert. The school meal can be purchased via ParentPay, during morning registration the children will then be given options from the school menu. Please fill in the Early Years Pupil Premium form to see if your child is eligible for free school meals.

Uniform

Our Stanstead Stars are required to wear a school uniform, please ensure all items are clearly labelled with your child's full name.

- ~ Royal blue crew neck
- ~ Sweatshirt/sweatshirt cardigan (with or without school logo)
- ~ Optional royal blue Stanstead zip fleece
- ~ White/light blue shirt/polo shirt
- ~ Grey/black school
- ~ Trousers/skirt/pinafore dress/shorts
- ~ Optional blue gingham summer dress
- ~ Grey/white/black plain socks or
- ~ Grey/black tights
- ~ Black flat sensible school shoes
(shoes are to be plain with no coloured logos)

For PE all children need:

- ~ Plain white T-shirt
- ~ Navy/black PE shorts or track-suit bottoms
(not leggings)
- ~ Plimsolls/trainers On days when pupils have PE, they can come to school in their PE kit.
No football tops, shorts or other branded clothing should be worn on PE days.



We also ask for parents to provide a pair of wellies to leave in school, these will be used when the children access the outdoor provision.

During the warmer weather please ensure your child has a named sunhat as we spend lots of our day outside. We ask that all day sun cream is applied before coming to school.

Toileting

We understand that little ones have accidents if you could send a spare pair of named clothes for your child to be changed into.

Encouraging children to take care of everyday hygiene routines and to use the toilet independently helps them to become more independent and self sufficient.

The expectation is that all children are toilet trained by the time they start school. Also, encourage your child to always wash their hands after using the toilet. Please speak to a member of the Early Years Team if you have any concerns.

Absences

If your child is unwell, please let the school office know. For sickness or diarrhoea, keep them home for 48 hours after the last episode. Schedule non-urgent medical, dental, and eye appointments outside school hours. Regular attendance is key for your child's growth and learning. If your child is absent for a long time without contact, they may be withdrawn from the nursery, and you could lose their place. Consistent attendance helps keep our learning environment stable and supportive for all children

What does a day look like in

8:45 – 9:00: Children arrive & settle into school
9:00 – 9:05: Register is completed & dinner choices taken
9:05 – 9:20: Phonics adult-led session
9:20 – 10:15: Exploring the provision
10:15 – 10:30: Literacy adult-led session
10:30 – 11:30: Exploring the provision
11:30 – 11:45: Maths adult-led session
11:45 – 12:00: 15-hour morning children home time/ 30-hour all-day children prepare for lunch
12:00 – 1:00: Lunch time
(12:15 – 15-hour afternoon children arrive)
1:00 – 1:05: Register is completed
1:05 – 1:20: Phonics adult-led session (Nursery)
Enquiry adult-led session (Reception)
1:20 – 2:45: Exploring the provision
2:45 – 3:00: Reading for pleasure session
3:00 – 3:15: Preparing for home time
3:15: Home time



Partnerships with Parents

Parents are children's first educators. The experiences and opportunities that you provide for your child will have an impact on their education. When parents and teachers work together, this will have an even bigger impact on their learning. We value our parent/carer partnership and we need you, to help make this most important time in your child's life fun, exciting and engaging as possible.

We will:

- Hold termly stay and plays
- Keep you informed about the activities and learning experiences that your child will be taking part in
- Hold 2 parent's evenings each year to discuss your child's progress

As a school we use the following to communicate with you:

Class Dojo



We use class dojo in school to communicate with families. This is where we will share notices and post pictures of what we have been doing. A member of staff will provide you with the details to connect you when you start at Stanstead.

Seesaw

We use an online learning journal called Seesaw. All children in our unit will have a personal online learning journal which records photos, observations and comments which build up a record of your child's experiences during their time with us. It is a fantastic way of you seeing what your child is up to.

Again, a member of staff will provide you with the details to connect when you start.



Curriculum

Throughout your child's time in Nursery and Reception they will be following the curriculum for the Early Years Foundation Stage, working towards the Early Learning Goals by the end of Reception.

This curriculum outlines standards for learning and development for all children aged 0-5 and is organised into seven areas:

Prime Areas			
Communication & Language	Physical	Personal, Social & Emotional Development (PSED)	
Specific Areas			
Maths	Literacy	Understanding the World	Expressive Arts & Design

We teach through an enquiry led curriculum with the following topics:

Autumn – What is the History within me?

Spring – What's life like beyond Rise Park?

Summer – How can I make a change for life?

We will share updates of what the children have been learning through your Seesaw account.

Phonics and Reading

Nursery

In Nursery, we focus on Pre-Phonics through games, songs and stories. Pre-Phonics concentrates on developing children's speaking and listening skills and lays the foundations for the phonic work which starts in Reception. The emphasis during Nursery is to get children attuned to the sounds around them and ready to begin developing oral blending and segmenting skills.

Starting in the Spring Term, the Nursery 2 children will begin to recognise sounds, signs and symbols in our environment and begin to form and recognise code through a programme called Teeny Reading Seeds.

https://phonicsinternationalpreschool.com/new_2013_Information_Booklet_TRS.pdf



No Nonsense
Phonics Skills

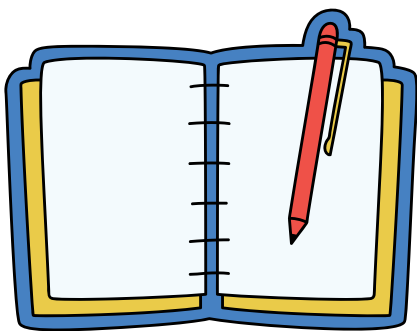
Reception

In Reception we follow the Debbie Hepplewhite's No Nonsense Phonics Skills programme. Our lessons focus on learning new code and applying their new knowledge through the multi-skills and mini-story lessons. <https://nononsensephonics.com/> You will be provided with further information about our Phonics Scheme and what you can do to help at home during our Phonics Workshop in September. Keep your eyes peeled for an invitation.



Reading books and Diaries

All children will be given a Phonics book and diary to take home. These should be brought to school **everyday** to allow teachers to read with your child in school. We ask that you read with your child every night and record this in the diary.



Children will also pick a reading for pleasure book each week to share at home. We also have a weekly reading morning on a Wednesday where parents can come into school and share a book with their child at the beginning of the school day.

Environment

Our EYFS is a mixed Nursery & Reception unit. The children spend their time exploring the provision together & split for adult led sessions.

When exploring in the provision the children have the opportunity to play in our indoor or outdoor classroom. The indoor classrooms are well resourced & offer spacious areas for learning. Our inside classroom is split into themed areas:



The Cosy Zone

This is where the children love to cosy up in our Reading Pod to share their favourite stories alongside their peers. They have the opportunity to develop their mark making skills using our writing materials. Within our Cosy Zone there is also a Phonics station where the children can explore their adult led learning further.

The Investigation Zone

This is where you will find our Maths and Construction resources. Children get to be creative, testing out these concepts and applying their own logic to what they make.

Experimenting with materials lets children work on their logic and puzzle solving skills. The investigation zone supports the children's maths skills as they learn about shapes, space, measuring and sizes.



The Discovery Zone

This hosts all of our sensory and messy play. The children love moulding, squeezing and squashing the dough. We also have a water & sand tray within our Discovery Zone for the children to explore different sensory and messy play materials. We often have items hidden within for the children to dig, scoop & discover to provoke questioning and curiosity.



The Imagination Zone

This area is where you'll find our home corner, role play stand & small world.

Imaginative play is when the children can pretend to be anything from a parent, doctor, firefighter to an alien. They'll pretend play & act as if they are that character, interacting and making decisions in their role.

Imaginative play gives children the opportunity to learn practical life skills, such as dressing themselves, how to cooperate and share with others.



The Creative Zone

Our Creative Zone allows the children to paint, draw, craft and box model.

This area has lots of benefits for the children, they can expand their vocabulary and express emotions, as well as developing their physical skills.

When children draw, paint or sculpt, they are doing something creative, which then allows for self-expression. It also provides children with the opportunity to try out new ideas, new ways of thinking and problem solving.



These zones are fed into our outside area as well with the following learning spaces:



Literacy Shed



Investigation Shed



The Cosy Cottage



Water Shed



Sand Pit



Sand Shed



Discovery Garden



Physical Area



The Stage Area



The Pirate Ship

These areas are all continuous provision zones that are available to the children all year round. We provide the children with enhancements based on our enquiry or child observations. Some examples of these can be seen below:





Contact details

Telephone: 0115 9156300

email: admin@stansteadfha.co.uk

website: www.stansteadprimary.co.uk

Follow us on Facebook: @StansteadFHA

Follow us on Twitter: @StansteadFHA

